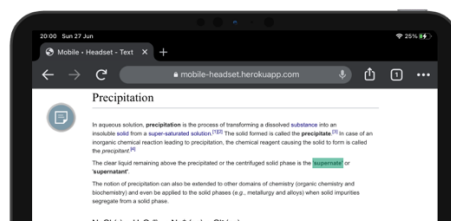


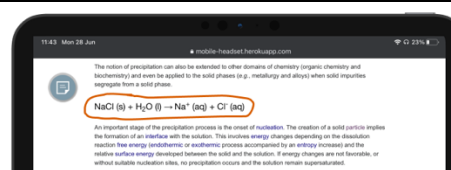
# AnnotAR Tasks

## 1 Inserting Annotations on Text

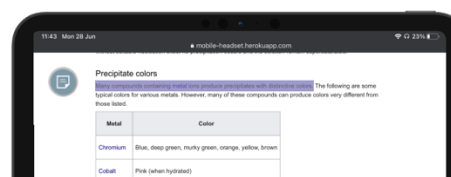
1.1) Highlight the word "supernate" and insert a picture of a zebra.



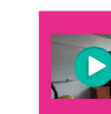
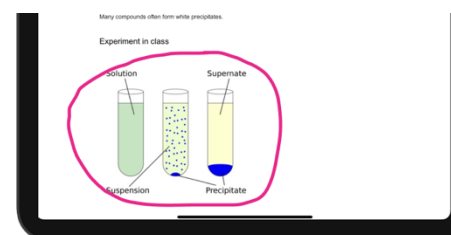
1.2) Circle the formula "NaCl (s) + H2O (l) -> Na+ (aq) + Cl- (aq)" and take a picture of the monitor close to you with the headset.



1.3) Highlight the sentence "Many compounds containing metal ions produce precipitates with distinctive colors." and insert a picture of cheese.



1.4) Circle the picture that depicts three test tubes and take a video of the environment around you with the headset.

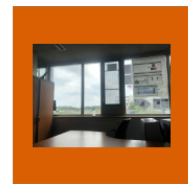
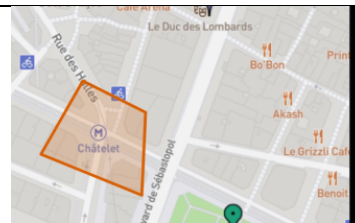


## 2 Inserting Annotations on Map

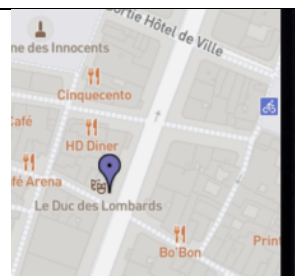
2.1) Add a marker to *Saint-Jacques Tower* and write on a Post-It Note: "This tower is closed."



2.2) Find the metro station *Châtelet*, draw a shape around it and take a photo of the window on your side with the Headset.



2.3) Add a marker to *Le Duc des Lombards* and draw a smiley on a Post-It Note.

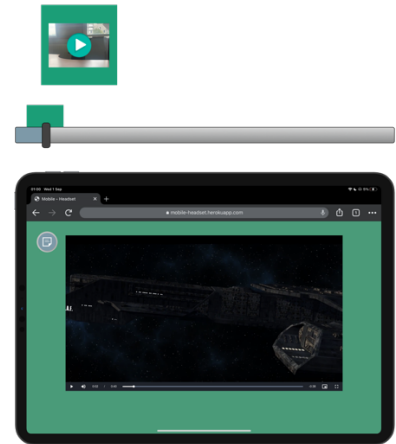


2.4) Find *Théâtre de la Ville*, draw a shape around it and take a photo of the questionnaire in front of you with the Headset.



### 3 Inserting Annotations on Video

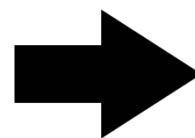
3.1) Start the video, then select the interval from 0:02 to 0:06 and take a video of the operator with the Headset.



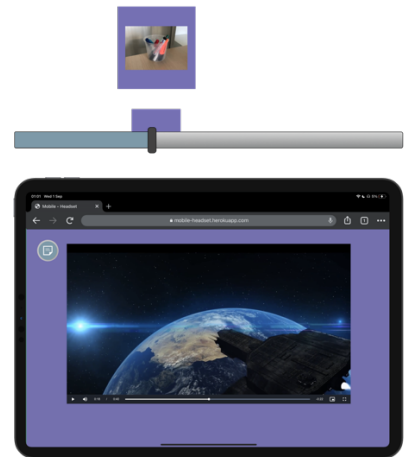
3.2) Circle the ship on 0:31 and write "Cute ship" on a Post-It Note.



This series of tasks  
continues on the next  
page

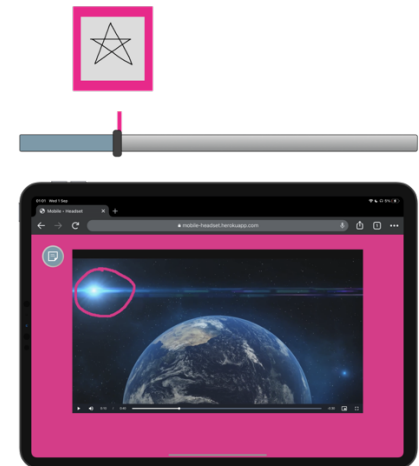


3.3) Select the interval from 0:15 to 0:19 and take a picture of the cup with highlighters (which is on your left) with the Headset.



---

3.4) Circle the star at 0:09 and draw a star on a Post-It Note.



## 4 Searching Annotations in Text

---

4.1) Tell the operator  
which annotation is  
associated with this text.

common aspect ratio of televisions, and computer monitors, has changed from 4:3 to 16:10, to 16:9.

Modern computer monitors are easily interchangeable with conventional television sets and vice versa. However, as computer monitors do not necessarily include integrated speakers nor TV tuners (such as digital television adapters), it may not be possible to use a computer monitor as a TV set without external

---

4.2) Tell the operator  
which part of the  
document is annotated  
with this picture.



---

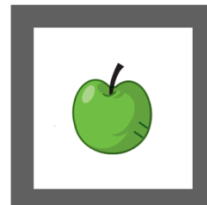
4.3) Tell the operator  
which annotation is  
associated with this  
circled text.

### History

Early electronic computers were fitted with a panel of light bulbs, where the state of would indicate the on/off state of a particular register or inside the computer. This

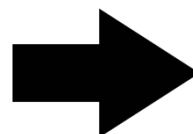
---

4.4) Tell the operator  
which part of the  
document is annotated  
with this picture.



---

This series of tasks  
continues on the next  
page



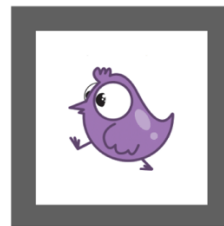
4.5) Tell the operator which annotation is associated with this text.

## Organic light-emitting diode

Main article: [Organic light-emitting diode](#)

Organic light-emitting diode (OLED) monitors provide higher contrast, better viewing angles than LCDs but they require more power when displaying backgrounds and have a severe problem known as burn-in, just like CRTs. LCD monitors and are often more expensive.

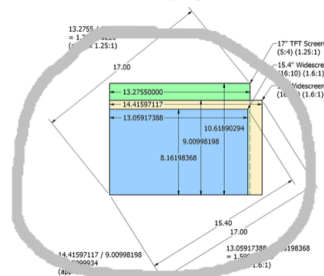
4.6) Tell the operator which part of the document is annotated with this picture.



4.7) Tell the operator which annotation is associated with this diagram.

## Size

Main article: [Display size](#)



The area, height and width of displays with identical diagonal measurements vary dependent on aspect ratio.

4.8) Tell the operator which part of the document is annotated with this picture.



## 5 Searching Annotations on Map

5.1) Tell the operator which annotation is associated with this location.



---

5.2) Tell the operator which location on the map is annotated with this picture.



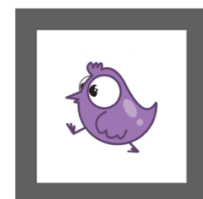
---

5.3) Tell the operator which annotation is associated with this area.



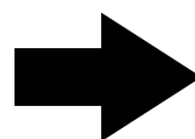
---

5.4) Tell the operator which location on the map is annotated with this picture.

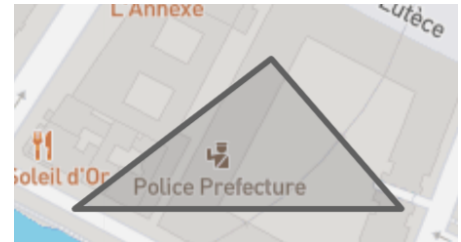


---

This series of tasks  
continues on the next  
page



5.5) Tell the operator which annotation is associated with this area.



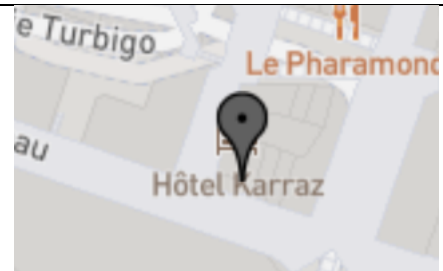
---

5.6) Tell the operator which location is annotated with this picture.



---

5.7) Tell the operator which annotation is associated with this location.



---

5.8) Tell the operator which location on the map is annotated with this picture.





## 6 Searching Annotations in Video

6.1) Play the video, then tell the operator which annotation the time 0:09 is associated with.

---

6.2) Tell the operator which time is annotated with this picture.



---

6.3) Tell the operator which annotation the time 0:39 is associated with.

---

6.4) Tell the operator which time is annotated with this picture.

